

Wash 'N Roll

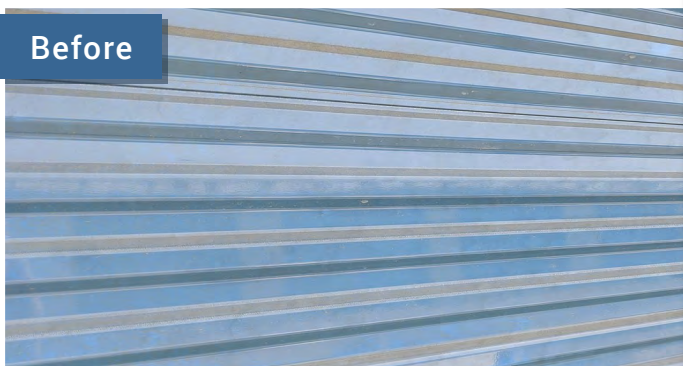
No-Water Rinse Door Cleaner

NEW

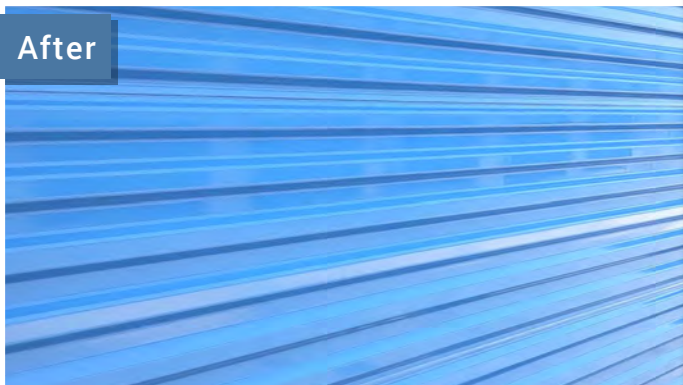


The Perfect Maintenance Cleaner for Roll-Up Doors!

Before



After



After



- **Easy to Use** - one step streak free wash with no water rinse. Just add to water and use your sprayer of choice to apply.
- **Economical** - 1 gallon of concentrate makes up to 32 gallons of solution!*
- **Low Water Use** - clean a door with as little as 32oz of water when mixed with Wash 'N Roll*
- **Minimal Equipment** - use your own carts and buckets, a soft RV brush* and a handheld power cleaner.
- **Benefits** - may include extended life for your door coating by removing grit and pollutants that can accelerate the weathering of your door's surface.

*Depending on dilution ratio and desired cleaning strength.





One of the great things about our **Wash 'N' Roll** maintenance door wash is you don't have to store lots of equipment you only use once or twice a year.

For a simple system use your own carts and buckets, a gallon of **Wash 'N Roll** and a soft RV type brush (optional). Then pick up a rechargeable power cleaner available at most hardware or big box stores.

That's it.

Visit us for how-to videos and product information

Example Wash 'N Roll Dilutions (adjust based on your particular needs)

Wash 'N Roll per gallon of water	Typical Usage
4oz	One pass rinse for well maintained doors
8oz	Rinse for doors with typical layers of dirt.
16oz	Wash and rinse for dirtier doors with use of a soft RV brush between wash and rinse to loosen dirt.

Tip: Give your doors a good initial wash then perform a maintenance wash on a schedule. Barring unusual situations this should allow a simple and fast one pass rinse at most locations.

Should I Clean My Roll-Up Doors?

While UV radiation is the major cause of fading and chalking paint, the 'dirt' on your door is actually composed of things like abrasive grits, salts, chemical pollutants and organic materials which can all contribute to a premature weathering of your door.

- Grit particles can create surface dulling micro abrasions as the doors are raised and lowered. This may also make your door's coating more porous allowing further penetration.
- Salts on the door are corrosive and will degrade paint over time. They also tend to expand and contract with moisture in the air which may further stress the door's coatings.
- Pollutants on the door's surface may degrade the coating chemically. They may also get 'baked' into the paint by the sun resulting in a rough surface. In many cases this cannot be removed -certainly not without damaging the coating - and must be stripped or painted over.



This is happening to your door now - even if you can't see it! The net effect is that over time a dirty door's surface will breakdown much faster than one that is regularly maintained.